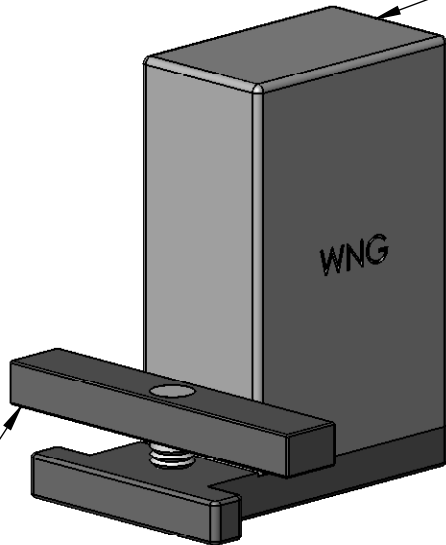


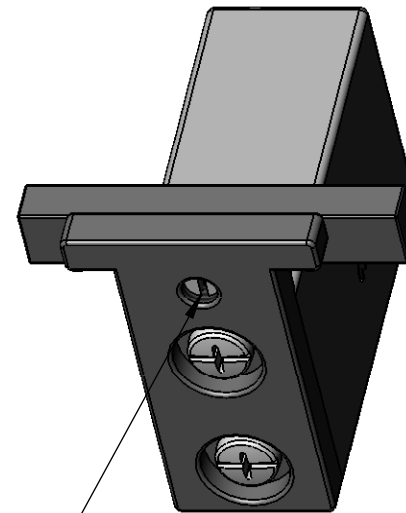
Adjustable Weighted Key Dip Block

This tool is fastest, most accurate way to measure keydip for the white keys. Can also be used to provide a weight for the sharps.

400 gram weight provides for a consistent pressure on the front rail cloth punchings



Light weight aluminum float rides on adjacent white keys



The float screw is adjustable so a wide range of key dip settings can be measured

Adjustable Weighted Key Dip Block
Part No. 06-5620